

You've purchased the latest Loopwheel technology, thank you. To ensure that your wheels run smoothly, please spend a few minutes fitting the wheels to your chair (without you in it). This is important so as not to invalidate our product warranty. Please follow the steps below:

**Step 1.** Remove your old wheels from the chair

**Step 2.** Remove the existing quick release axles from the wheels

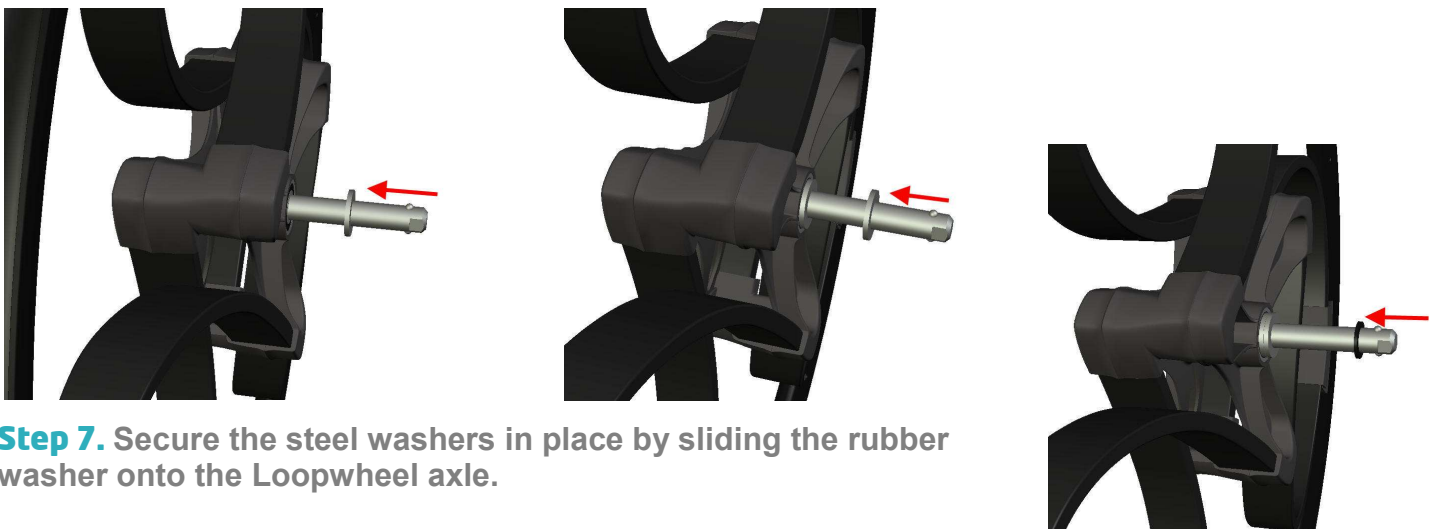
**Step 3.** Push the quick release axles into the Loopwheels, or if you've purchased axles from us, remove them from the packaging and push them into the Loopwheel (see right)

**Step 4.** Attach the Loopwheels to the chair, one side at a time

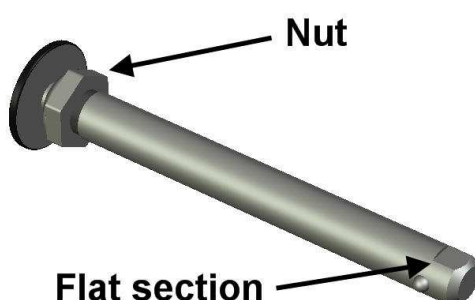


**Step 5.** Rotate the loopwheel slowly to check that no part of the Loopwheel touches or rubs the frame of the chair. We recommend a minimum clearance of 10mm. If the clearance is good, move to **Step 7**. If there is a clash or not enough clearance move to **Step 6**.

**Step 6.** Remove the Loopwheel from the chair, place one of the steel washers provided onto the inner side of the Loopwheel axle. This will move the Loopwheel further away from the wheelchair frame. Repeat **Steps 5 and 6** (2 times max) until there is the correct amount of clearance.



**Step 7.** Secure the steel washers in place by sliding the rubber washer onto the Loopwheel axle.



**Minor Adjustment.** The length of the Loopwheel axles can be adjusted by rotating the 'Nut', clockwise (shorter) counter clockwise (longer). This is done by clamping the 'Flat section' and turning the 'Nut' using a suitable spanner. Total adjustment is approximately 8mm.